

Success Story

Company Overview

Headquartered in Salina, KS, A-Plus Chem-Dry provides carpet and rug cleaning services to the greater central Kansas area.

Industry: Carpet Cleaning

Year Founded: 1995

Number of Office Employees: 2 employees

Number of Field Employees: 6 employees

Business Challenges

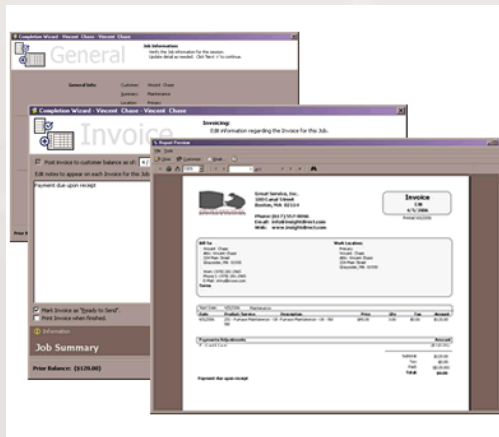
A-Plus Chem-Dry was using an older software package called Camelot that was not meeting the company's business objectives. In particular, A-Plus Chem-Dry was in need of a more stable software program that could manage the company's scheduling and marketing campaigns to existing and potential clients. According to President Mark Jameson, the company also needed the ability to write custom reports and ease the administrative burden of transferring its sales information to the company's QuickBooks accounting package.

Why ServiceCEO?

A-Plus Chem-Dry selected Insight Direct's ServiceCEO for its proven system stability and its ability to integrate seamlessly with QuickBooks. Jameson cites Insight Direct's proven know-how and stability in the industry as well as the host of tools and training resources Insight Direct makes available to customers, as key reasons A-Plus Chem-Dry selected ServiceCEO. "With all the videos and classes that you can take, it was easy to train our CSRs on the new system," said Jameson.

Key Feature - Invoice Creation

According to Jameson, ServiceCEO has really streamlined A-Plus Chem-Dry's end-of-day procedures. Closing out jobs and creating invoices has become "a SNAP!"



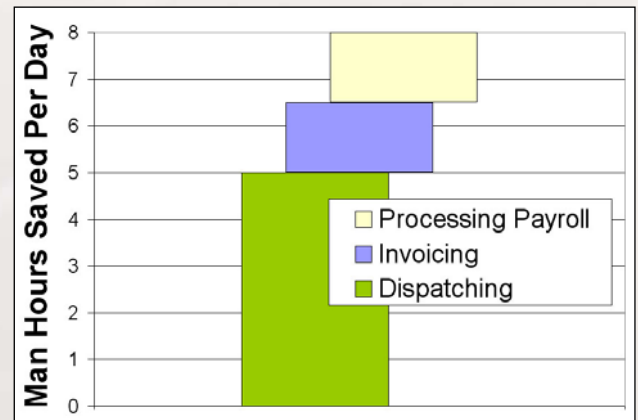
ChemDry

**A-Plus
Chem-Dry**

**Industry:
Carpet Cleaning**

"Insight Direct's expert team made transitioning from our previous Camelot software program to ServiceCEO, including importing all of our customer data, quick and painless."

**Mark Jameson
President**



Time Savings

Providing the ability to track field technicians while closing jobs and successfully integrating with QuickBooks billing system, ServiceCEO saves A-Plus Chem-Dry approximately 8 hours a day. This critical time savings enables Jameson and his employees to focus more on growing the company.

Insight Direct, Inc.

180 Canal Street, Boston, MA 02114 USA ■ 1.800.471.4200 ■ 1.617.577.0066

E-mail: sales@insightdirect.com ■ Web: www.insightdirect.com

ServiceCEO is a registered trademark of Insight Direct in the U.S. and/or other countries. Other names mentioned may be the registered trademarks or trademarks of their respective owners. Copyright © 2007 Insight Direct, Inc. - All rights reserved.